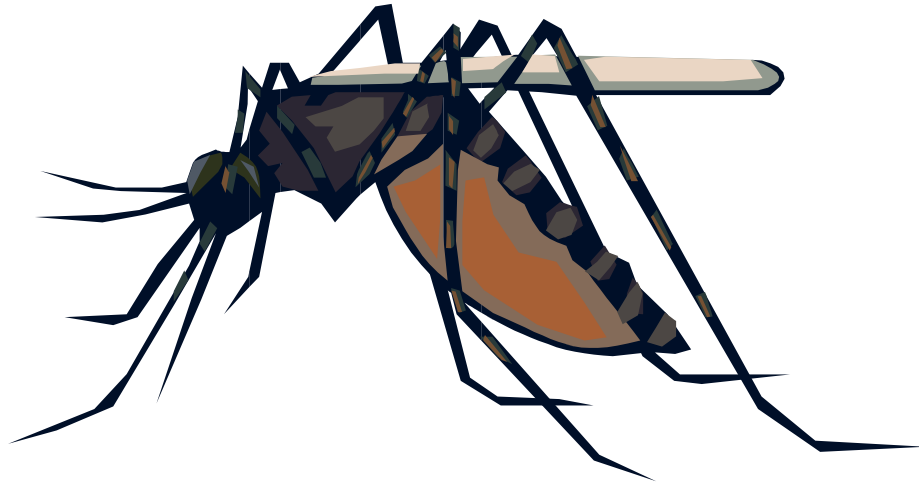


## Mosquito:

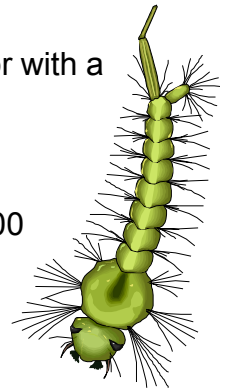


**My Home:** I will usually remain within one mile of the place where my egg hatched. I am found most often near a water source; rivers, ponds, lakes, streams or pools of standing water.

**What I eat:** As a larva, I eat the organic material in the water. As an adult, I will drink the nectar or juices from decaying materials. Only the female mosquito will bite. The females require a blood meal to develop her eggs.

**What I look like:** I am 1/2 to 3/4 of an inch in length, gray in color with a long needle like mouth part that is used to drink my food.

**How I am born:** I go through four stages of development: egg, larva, pupa and adult. A female will lay her eggs in water, 100 to 300 at a time. As a larva in the water, I breathe by using a tube I stick up above the surface like a snorkel. My life cycle from egg to adult is about a month. Female mosquitoes live up to 100 days. The males only live approximately 20 days.



**Fun Facts:** Mosquitoes were around about 170 million years ago during the time of the dinosaurs. Remember to use your repellent!

There are around 3,500 species of mosquitoes.