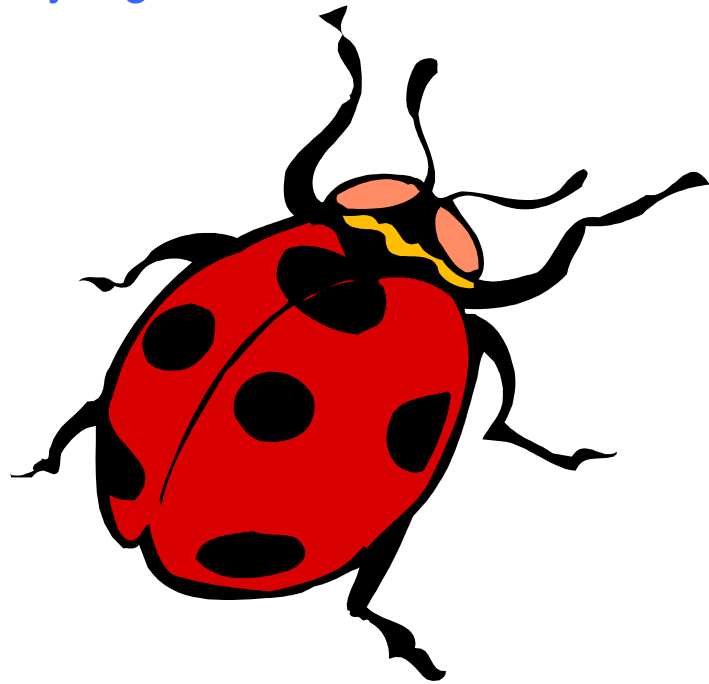


Beetle: Ladybug:



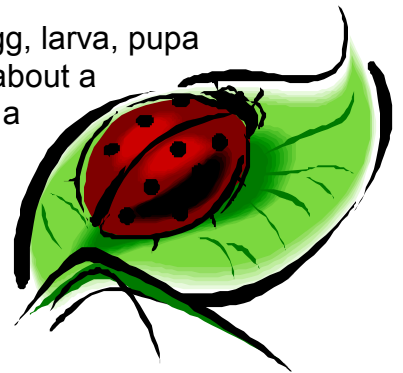
My Home: I am found all over the world and live in a variety of places including gardens, forests, fields and grasslands.

What I eat: Aphids are my favorite food. As a larva, I can eat over 25 aphids a day. Once I am grown to an adult, I can eat over 50 aphids a day.

What I look like: I am around 1/4 of an inch long and am usually yellow, orange or red with black spots on my wing covers. I also have black legs, head and antennae. The number of black spots I might have will vary by individual ladybug. My black spots will fade, as I get older.

How I am born: I go through four stages of development: egg, larva, pupa and adult. My tiny yellow egg is laid on a leaf and will hatch in about a week. When I hatch, I am in a worm like larva stage for almost a month. I finally get strong enough to pupate and become an adult. I can hibernate during the winter and live around one year.

Fun Facts: A ladybug's wings beat over 80 times a second in flight. Ladybugs will play dead when threatened. In 1999, four ladybugs were sent into space on NASA's space shuttle.



There are 5000 different kinds of ladybugs worldwide.