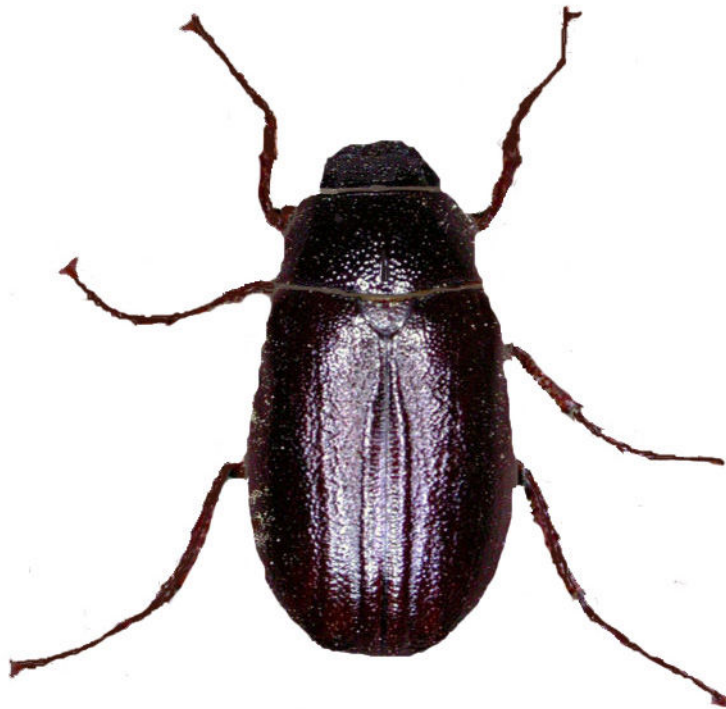


Beetle: June

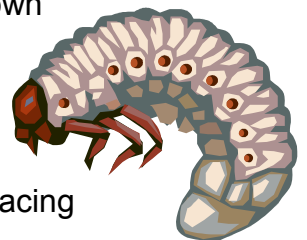


My Home: Found all over North America, I hide in trees during the day. As adult beetles, we swarm in great numbers in early summer, usually at dark and are strongly attracted to the lights.

What I eat: As a larva, I live underground and eat roots of grasses and other plants. As an adult, I feed at night and eat vegetation, usually the leaves from trees and bushes.

What I look like: I am less than 1 inch in length, are a dark brown to blackish in color, have a hard casing and have wings.

How I am born: I go through four stages of development: egg, larva, pupa and adult. My egg is laid in the ground, and I can live for two to three years in the ground as a larva before surfacing to become an adult. My total lifespan is up to four years.



Fun Facts: They get their name from emerging in great quantities in June. These beetles make a tasty food for your pet toads and lizards.

There are over 200 species in North America.