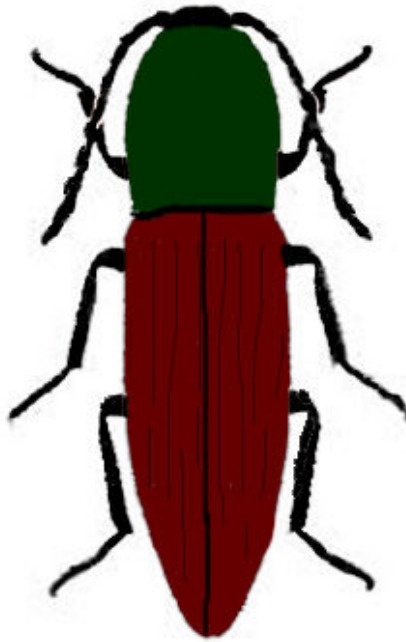


## Beetle: Click



**My Home:** I am found all over the world in warm climates and in areas of high vegetation. I am nocturnal and am attracted to lights.

**What I eat:** As a larva, I will eat the roots of plants. As an adult, I drink the nectar from flowers.

**What I look like:** I am brown in color and from 1/4 to 3/4 of an inch in length. I have a hinge across my body that allows me to flex. If I fall on my back I will flex, which makes me fly up in the air and produces the clicking sound. I will also 'click' to scare off predators.

**How I am born:** I go through four stages of development: egg, larva, pupa and adult. The female lays her eggs at the base of plants. Once my egg hatches into larva, I will live up to four years in this stage before I turn into an adult. Both adults and larvae will hibernate in the ground during the winter.

**Fun Facts:** They are very good at 'playing dead' to be less interesting to a bird or other predator and will pretend they are dead for hours at a time.

There are around 7,000 species of click beetles worldwide.