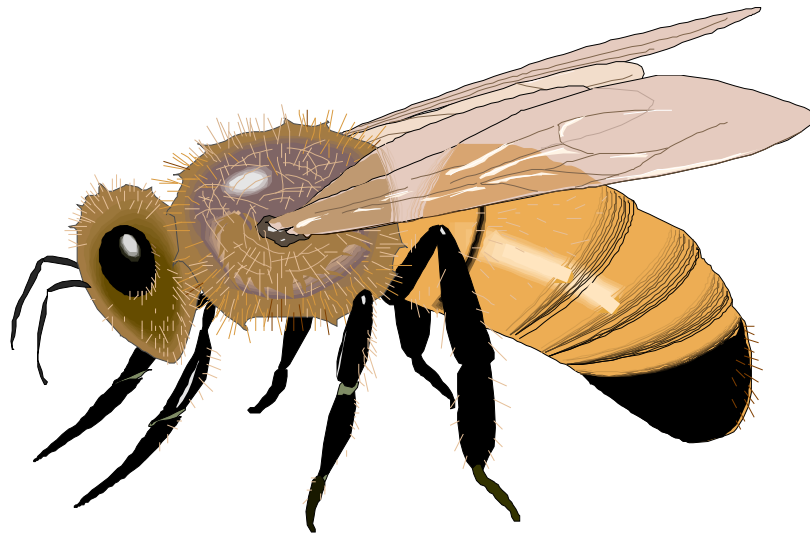


Bee: Honey



My Home: I am a social insect and live in large colonies, usually in hives, up to 80,000 individuals. I am found worldwide.

What I eat: I drink nectar from flowers or juices from fruit.

What I look like: Usually less than 3/4 of an inch in length and have four wings. I am usually golden brown in color with black stripes on my abdomen. I have a stinger at the end of my abdomen.

How I am born: I go through four stages of development: egg, larva, pupa and adult. The queen bee lays eggs and the worker bees will take care of my egg until I hatch. I will stay with the hive usually for the rest of my life.

Fun Facts: Honeybees are the only insects that produce a food that is consumed by humans. They provide people with honey, bee's wax and pollinate crops. An average hive yields 50 pounds of honey. To make one pound of honey requires the nectar from millions of flowers.

They communicate with each other using a 'dance' language.

Honeybees do not hibernate during the winter, but group together and use their community warmth to stay alive. A honeybee will die if it uses its stinger.

There are about 20,000 species of bees in the world.

