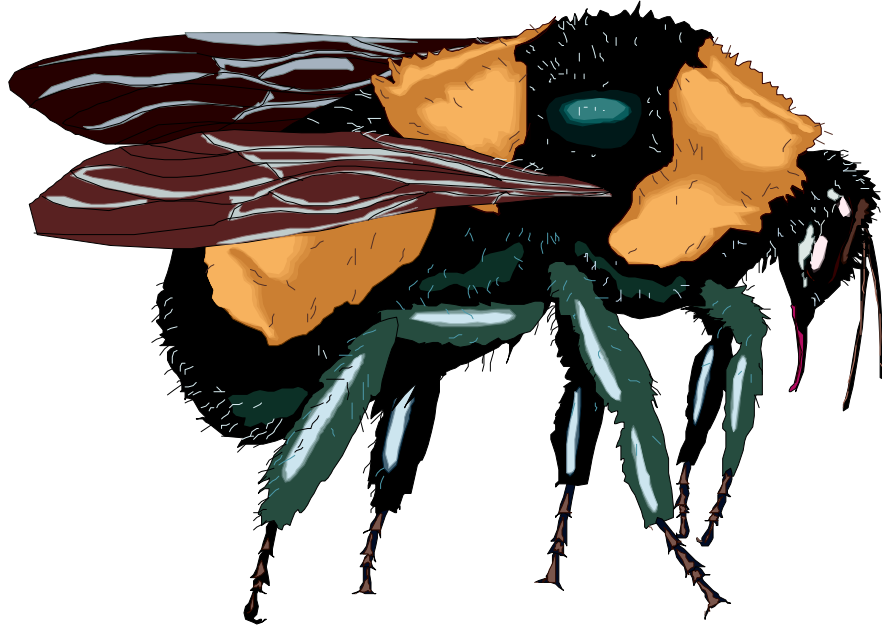


Bee: Bumble



My Home: I live in small nests and do not swarm. The queen will spend her entire life in the nest. The male drones once hatched will mate with the queen, and fly off to live independent lives.

What I eat: As an adult, I drink the nectar from flowers or juices from fruit. I will only produce enough honey to feed the young bumblebees, which I store in honey pots.

What I look like: I am 3/4 of an inch in length, have four wings, a stinger at the end of my abdomen and usually I am yellow and black in color and appear to be 'furry' compared to other bees. While I am bigger than a honeybee, I am much less aggressive and usually will only attack if I feel my life is in danger.

How I am born: I go through four stages of development: egg, larva, pupa and adult. Each spring the queen bee builds a nest out of wax. In each cell she deposits an egg and pollen for food then seals up the cell. My egg will hatch, go through larva and pupa stages and finally develop into an adult worker ant, cutting my way out of the wax cell. It takes me around 21 days to go from egg to adult.

Fun Facts: If you find yourself in the presence of a bumblebee just stand quietly, once they realize you are not a flower, they will move away. A bumblebee will die if it uses its stinger once.