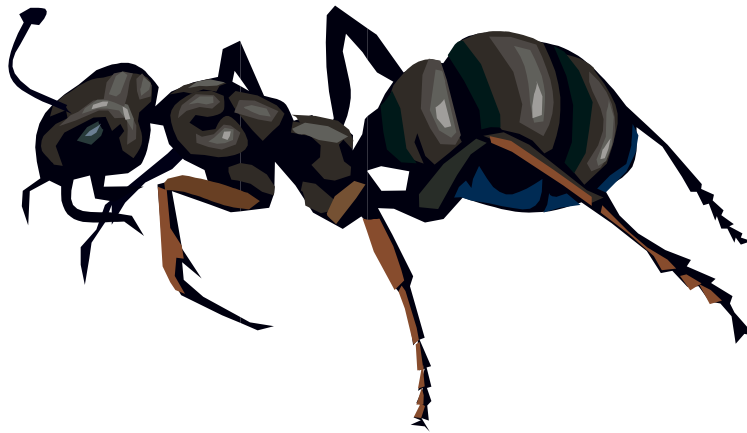


Ant:



My Home: I live in a colony, which can be in an anthill in the ground, a rotted log, an infested structure such as the foundation of a home or tree.

What I eat: My jaws open sideways like scissors. I cannot eat 'whole' food, but instead use my jaws to squeeze out the juice and throw away the hull. I eat almost anything from other insects to vegetation.

What I look like: I have six legs and two eyes: which are made up of many smaller eyes (or lenses). I have two stomachs: the first for my food, the second I use to feed other ants. I have two antennae that I use for smell and touch. The queen ant has wings and so do the male ants, both for a short time.

How I am born: I have four stages of development: egg, larva, pupa and adult. The queen in my ant colony lays thousands of eggs. Worker ants take care of my egg until it hatches. I will live 45 to 60 days.

Fun Facts: An ant can lift 10 to 20 times its own body weight. If a man weighed 180 pounds, he would have to lift 1,800 to 3,600 pounds to be as strong as an ant.



Ants have the largest brain of any insect. The combined brain cells of a colony of ants have about the same number of brain cells as a human.

There are over 35,000 species of ants in the world.